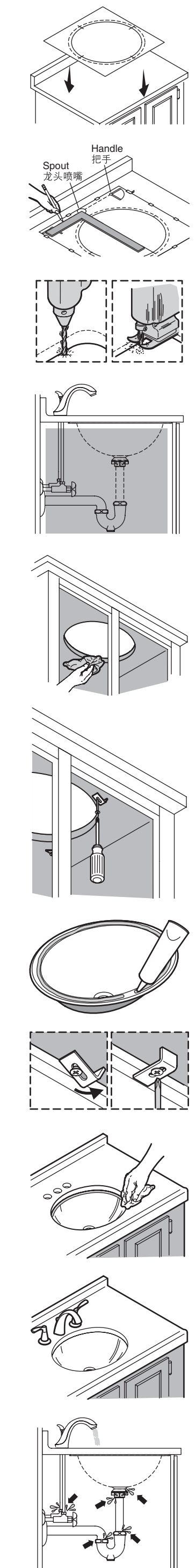


INSTALL THE LAVATORY

- Countertop Installations:** Position the template on the countertop.
- Mark the faucet spout, handle, and sink cutout locations on the countertop.
Re-check the clearance between the lavatory, faucet, backsplash, and cabinet. Adjust the template accordingly.
- Drill a pilot hole and cut the countertop opening along the traced line.
- Verify cabinet clearance.
- Clean the underside of the countertop and the rim of the sink.
- Loosely install the clips.
- Generously apply 100% silicone sealant around the rim. Do not use adhesives or adhesive sealants.
- Position the sink under the opening. Rotate each clip over the rim. Evenly tighten the clips to secure.
- Immediately wipe away any excess sealant.
- Complete the faucet and drain installations.
- Run water into the sink and check all connections for leaks.



安装脸盆

- 安装台面, 将切割模板置于台面。
- 在切割模板上标记出龙头喷嘴、把手和台盆的位置。
再次检查脸盆、水龙头、防溅挡板及储物柜的空间及距离, 如有需要可调整切割图的位置。
- 钻导孔, 并沿着模板切割台面。
- 调整柜子空间。
- 清洁台面下方及台盆边缘。
- 安装夹子, 勿夹紧。
注意: 请使用里洗台制造商提供的铅锚和螺钉, 或参照里洗台制造商的说明书上所作的说明, 使用适当的扣件。
- 在脸盆边缘均匀地涂上硅胶, 使用100%纯硅胶, 请勿使用一般粘合剂或粘性密封胶。
- 将脸盆置于台面开口处, 依次旋转每个夹子, 夹紧以固定脸盆。
- 立刻抹去多余硅胶。
- 完成龙头和水管的安装。
- 试水, 检查是否有渗漏。

IMPORTANT CONSUMER INFORMATION (CARE AND CLEANING)

To keep your lavatory looking new, make sure you rinse it out thoroughly after each use. **DO NOT USE ABRASIVES** on this product, as they will scratch and ruin the surface. Stubborn stains, paint, or tar can be removed with turpentine or paint thinner. Do not use the product in the water below 0°C.

CAUTION: Please do not use hard materials (like scouring pad) to clean product surface, especially the product logo.

For Artist Edition Products:
Treat your decorative product just as you would treat your fine china. The best way to clean it is to use warm water and pat dry with a cotton cloth or soft sponge. **DO NOT** use bristle brushes or abrasive-backed sponges. They will scratch the decorative surface.

用户须知 (护理和清洁)

为保持脸盆光洁如新, 须确保每次使用后彻底冲洗干净。切勿使用腐蚀性的清洁剂, 以免刮花及破坏脸盆的表面。要清除顽固污垢, 油漆或柏油, 可使用松油或油漆稀释剂。不要在0°C以下的水环境中使用。

警告: 请勿使用钢丝球等硬质材料擦洗产品表面, 特别是产品商标处。

艺术陶瓷品使用及保养须知:
请您像珍惜您的珍贵瓷器一样对待您的艺术系列产品。最佳清洗方式是使用温水擦拭, 然后用棉布或软海绵轻轻拍干。请勿使用粗糙的刷子或带刮面的海绵, 以免划伤装饰表面。

SERVICE PARTS



维修零件