

7685T-4

挂墙式花洒龙头

7686T-4

挂墙式浴缸花洒龙头

安装之前

所有的资料是按最新出版的产品资料编写而成。科勒公司保留任何时候不经通知即可改变产品特性、包装或产品可供类型的权利。

说明书包括重要的安装、保养及清洁方面的内容，请把这些资料交给用户阅读。

注意事项：

- 1.一定要先彻底冲洗供水管以清除管道中的杂质。
- 2.切换器正常工作的最小压力为 0.05Mpa(0.5bar)。

3.花洒最高工作压力:0.5MPa(5 bar)。水压超过 0.5MPa(5 bar)须安装减压阀。花洒最高工作温度及环境温度:60°C。请特别注意花洒须远离浴霸，否则可能损坏花洒，甚至对使用者造成伤害。

BEFORE YOU BEGIN

All information is based on the latest product information available at the time of publication. Kohler Co. reserves the right to make changes in product characteristics, packaging, or availability at any time without notice.

Please leave these instructions for the consumer. They contain important information.

NOTES:

- 1.Flush the water supply pipes thoroughly to remove debris.
- 2.The minimum inlet water pressure for the diverter is 0.05Mpa(0.5bar).

3.The highest working pressure for handspray is 0.5Mpa (5 bars). If it exceeds 0.5Mpa(5 bars), a pressure reducer is needed. The highest water and environment temperature is 60°C. Please keep handspray away from heater, or maybe damage it and hurt user.

使用说明

将手柄轻轻提起，向左转为热水，右转为冷水。

对于 7686T，顺时针旋转切换器，花洒出水；关闭龙头，逆时针旋转切换器到停止位置，浴缸出水口出水。

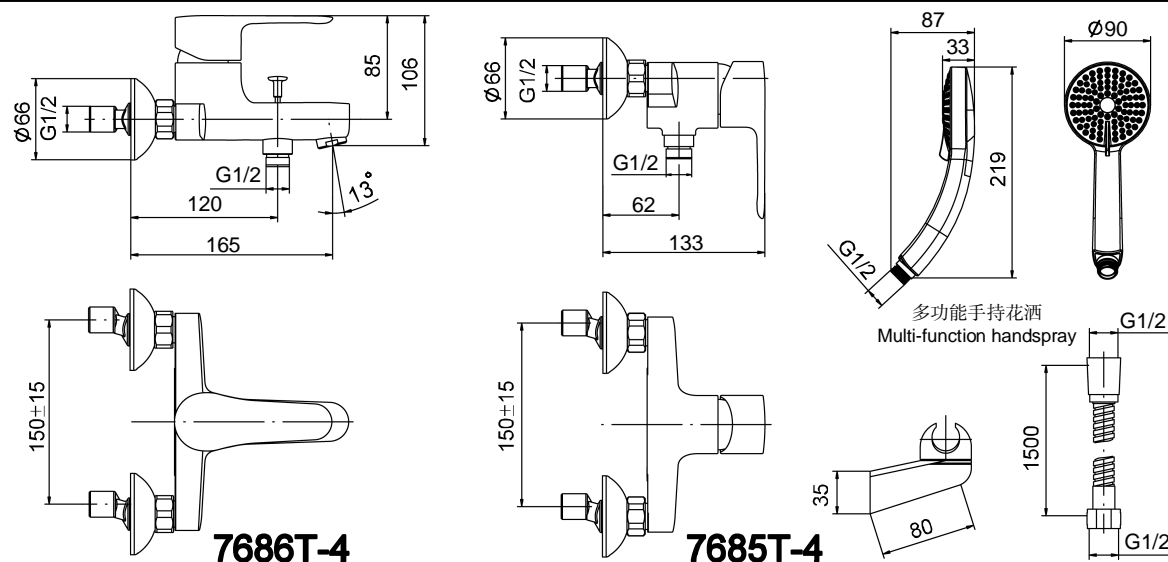
HANDLE OPERATION

Lift the handle gently. Turn left for hot water, right for cold water.

For 7686T, diverter turns clockwise for shower. Shut off the faucet, turns counter-clockwise until it stops for bath spout.

安装尺寸

ROUGH-IN DIMENSIONS

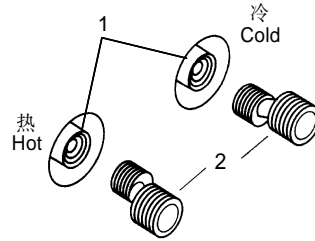


安装步骤

INSTALLATION

如何安装水龙头

为使安装顺利, G1/2 内螺纹管道配件(1)应已安装好。预留 150mm 的间距, 保持水平。管道配件要垂直并不能突出装修好的墙面。热供水管装在左边。



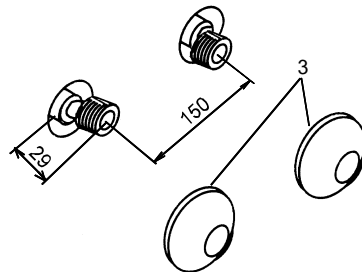
在两个接头(2)涂上螺纹密封胶或缠绕足以密封的密封胶带, 旋入冷热供水管中。

How to Install the Faucet

To perform installation, installer must provide G1/2 female supply fittings, spaced 150mm apart and level. The supply fittings should be vertical and not beyond the finished wall. Hot supply pipe must be located on the left.

Install the two offset connectors(2) into the hot and cold supply pipes. Use appropriate thread sealants or thread tape on pipe threads.

调节两个接头, 使其中心距离为 150mm 并保持同一水平, 凸出墙面 29 毫米。将装饰罩(3)旋入接头, 紧贴墙壁。

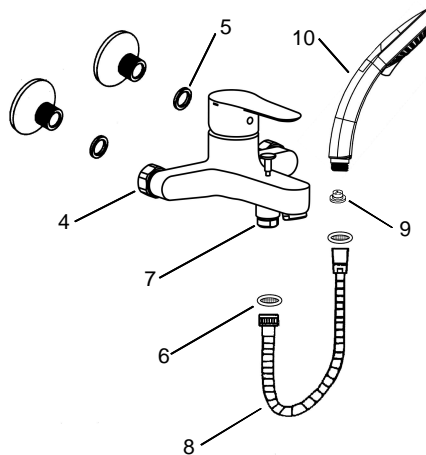


Adjust the center-to-center distance between the connectors to 150mm and level. They should extend 29mm beyond the finished wall. Thread the escutcheons (3) onto the connectors until they are against the finished wall.

将垫片(5)放入水龙头螺母(4)中, 将螺母旋到接头上。

在锁紧螺母时, 须用带状扳手或用软布垫在普通扳手和螺母之间, 以保护镀层表面。

将限流器(9)放入手持花洒(10)进水口处, 用软管(8)带垫片(6)连接出水口(7)与花洒。



Put the washers(5) into the nuts(4), thread the nuts to connectors.

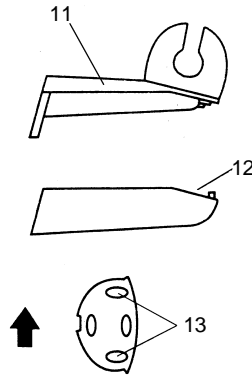
When tighten the nuts, use strap wrench or soft cloth between product and regular wrench to protect the finish.

Insert the water flow restrictor(9) into the inlet of the handspray(10). Connect the faucet outlet(7) and the handspray with hose(8) and washers(6).

如何安装托架

在墙面上选择合适的位置来安装托架。

把托架盖子(12)与底板(11)撬开。在墙壁上标记托架底板安装孔位(13)。在墙上钻两个洞,以便于安装胀塞及螺钉。旋紧螺钉,使托架紧贴墙壁固定。用托架盖子盖住底板。



把花洒挂在托架上。

How to Install the Shower Bracket

Determine a suitable location on the finished wall to install the bracket.

Pry between the bracket cover(12) and base(11) to separate the two parts. Mark bracket base mounting hole locations(13) on wall as shown. Drill two holes on the finished wall as required, for the installation anchors and screws. Tighten screws to secure bracket base to the finished wall. Replace bracket cover onto bracket base.

Hang the handspray on the shower bracket.

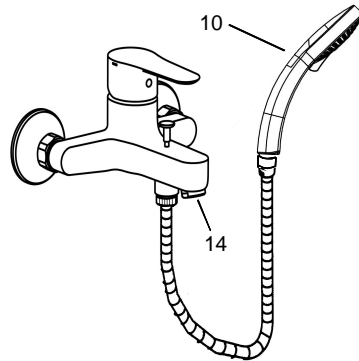
安装结果检查

检查并确保所有的衔接处都已拧紧。

确保手柄在“关”的位置。

打开排水系统和主要供水源,检查并修理有漏水的接口。

将起泡器(14)和花洒(10)拆下,打开水龙头的冷热水,让水流出一分钟以清除杂质。检查渗漏,冲洗起泡器,关闭水龙头,重新装回起泡器和花洒。



INSTALLATION CHECKOUT

Ensure that all coupling nuts are tight.

Ensure that the handle is in the off position.

Turn on the main water supply, and check for leaks. Repair as needed.

Remove the aerator(14) and handspray(10). Run hot and cold water through the faucet for about one minute to remove any debris. Check for leaks. Remove any debris from the aerator. Shut off the faucet, and reinstall the aerator and handspray.

清理说明

适用于所有加工处理过的表面:以中性肥皂水清洗镀层表面,再以干净的软布彻底擦干整个表面,许多清洁剂,比如氨水、去污粉及洁厕灵等,会对电镀表面造成伤害,切忌使用。

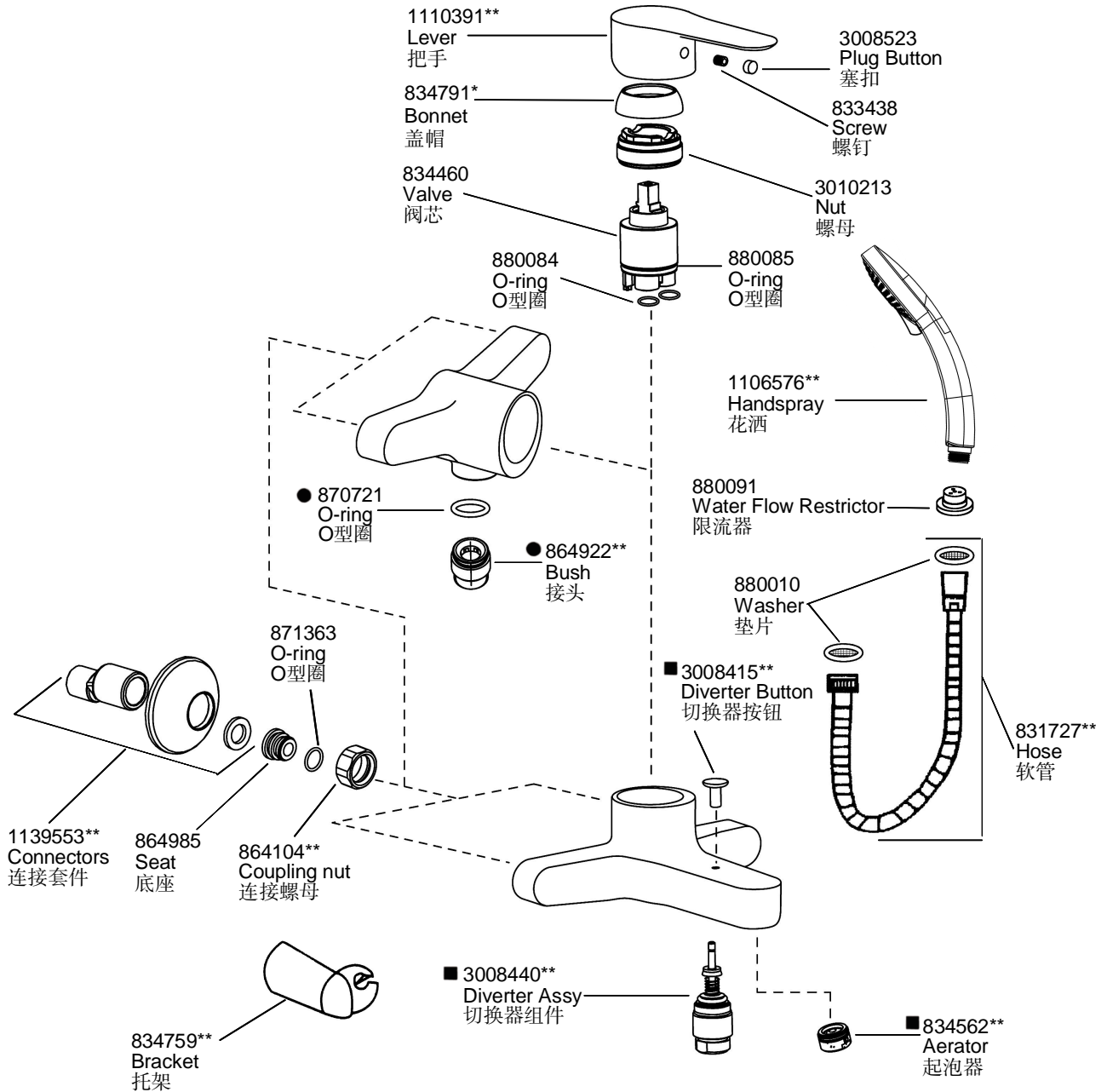
有磨损性的清洁用具或清洁剂也不可适用于科勒牌的水龙头及其配件上。

CLEANING INSTRUCTIONS

All Finishes: Clean the finish with a mild soap and warm water. Wipe entire surface completely dry with a clean soft cloth. Many cleaners may contain chemicals, such as ammonia, chlorine, toilet cleaner etc. which could adversely affect the finish and are not recommended for cleaning.

Do not use abrasive cleaners or solvents on Kohler faucets and fittings.

7685T-4 挂墙式花洒龙头 7686T-4 挂墙式浴缸花洒龙头



注: 1. 描述中有“●”的零件仅用于 7685T-4。
2. 描述中有“■”的零件仅用于 7686T-4。

**订购时请说明颜色编号
**Color code must be specified when ordering.